

**SITE PLAN NOTES:**

**AMERICAN WITH DISABILITIES ACT:**

THIS DEVELOPMENT SHALL COMPLY WITH THE MOST CURRENT REQUIREMENTS OF THE AMERICANS WITH DISABILITIES ACT (ADA).

**DRAINAGE FACILITIES MAINTENANCE NOTE**

ALL DRAINAGE FACILITIES SHALL BE MAINTAINED BY ALL PROPERTY OWNERS. THE PROPERTY OWNERS SHALL ALSO HAVE THE RESPONSIBILITY FOR MAINTENANCE OF THE PUBLIC DRAINAGE EASEMENT AS PER ARTICLE 14-8-2(K) OF THE SANTA FE CITY CODE.

INSPECTIONS SHALL BE CONDUCTED BY A REGISTERED PROFESSIONAL ENGINEER IN THE STATE OF NEW MEXICO OR OTHER QUALIFIED PERSON. INSPECTIONS SHALL BE CONDUCTED ON THE DRAINAGE FACILITIES IN ACCORDANCE WITH THE FOLLOWING SCHEDULE:

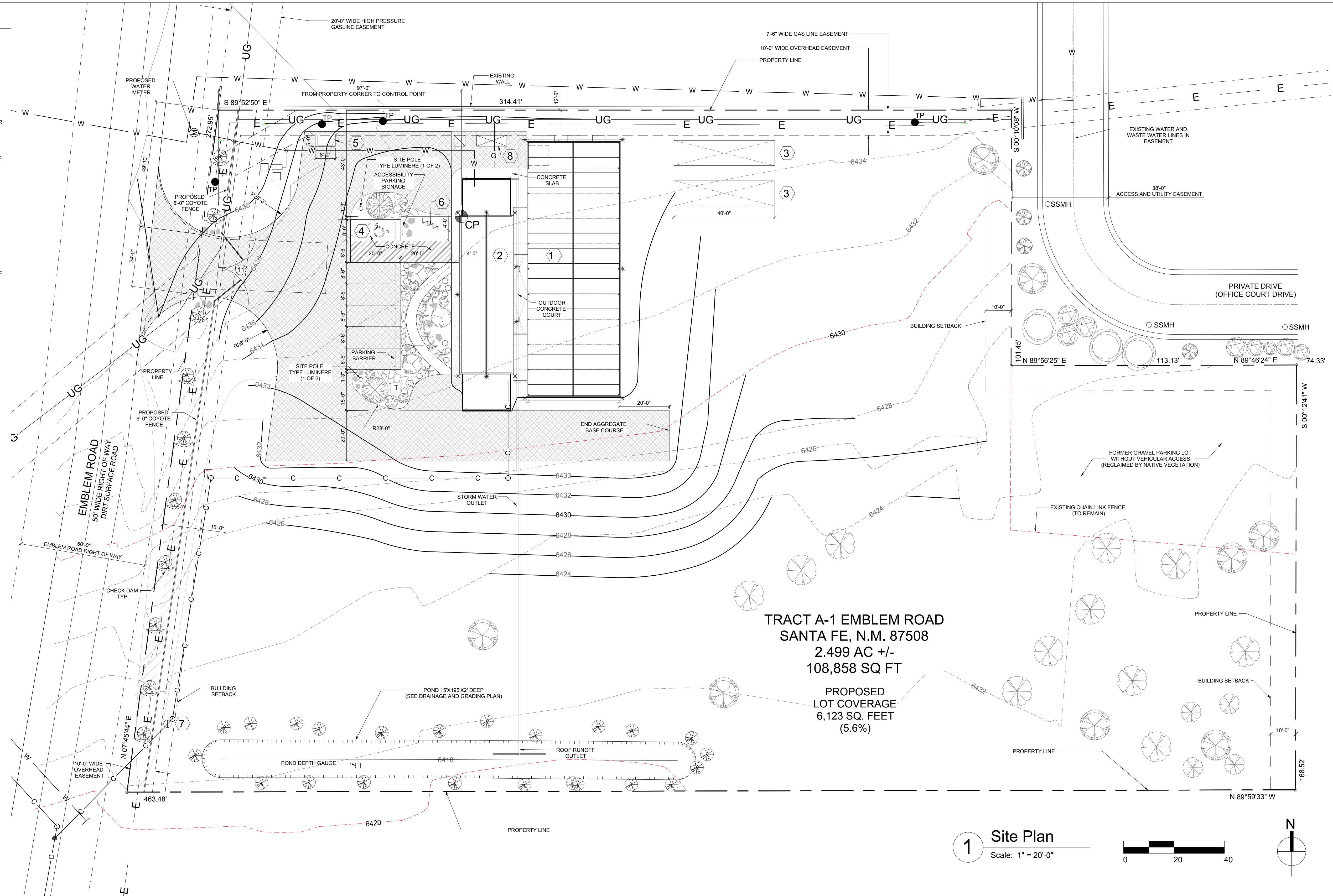
ON OR ABOUT MARCH 15, ON OR ABOUT SEPTEMBER 15, AND AFTER EACH STORM EVENT OF 1/4" OR GREATER, MAINTENANCE OF THE DRAINAGE FACILITIES SHALL BE CONDUCTED AND DOCUMENTED BY THE ENGINEER AND THE OWNER. THE OWNER SHALL MAINTAIN A FILE OF THE INSPECTIONS AND REMEDIAL ACTION CONDUCTED ON THE DRAINAGE FACILITIES.

WORK SHALL BE CONDUCTED IN ACCORDANCE WITH THE ENGINEER'S RECOMMENDATIONS, AND SHALL INCLUDE, BUT IS NOT LIMITED TO THE FOLLOWING:

- A. FLUSH ALL CULVERTS, DROP INLETS AND DRAINAGE PIPES TO REMOVE SEDIMENT AND VEGETATION THAT PREVENTS OR HINDERS THE FLOW OF STORM WATER IN THE DRAINAGE STRUCTURE(S).
- B. REMOVE SEDIMENT IN PONDS THAT IS GREATER THAN 6-INCHES IN DEPTH, AND IF NECESSARY, RESEED WITH NATIVE GRASSES AND INSTALL FILTER FABRIC AND 3 TO 4 INCH COBBLE AS DIRECTED BY THE ENGINEER.
- C. INSPECT FOR SEDIMENTATION IN ALL SWALES, DITCHES, DRAINAGE PONDS AND REMOVE AND STABILIZE AS NECESSARY.
- D. INSPECT FOR SOIL EROSION AT ALL DRAINAGE PONDS, CUT AND FILL SLOPES, AND REPAIR OR STABILIZE ACCORDINGLY.
- E. INSPECT THE STRUCTURAL INTEGRITY OF DRAINAGE PONDS, SLOPES, RIP-RAP, GABIONS, DROP INLETS, CULVERTS, ENERGY DISSIPATORS, AND RETAINING WALLS, ROCK PLATING, EROSION CONTROL MATS OR BLANKETS, AND REPAIR OR STABILIZE ACCORDINGLY.
- F. ALL BASINS/PONDS SHALL DRAIN WITHIN 24 HOURS OF A STORM EVENT AS PER ARTICLE 14-8-2(D)(4)(c)(ii).

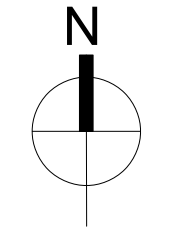
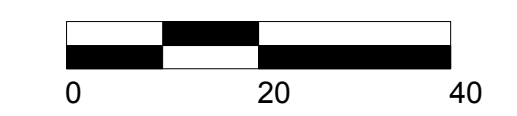
**GUNNISON'S PRAIRIE DOG NOTE:**

THE PROJECT SHALL COMPLY WITH THE PROVISIONS OF THE GUNNISON'S PRAIRIE DOG ORDINANCE (ARTICLE 14-8.12).



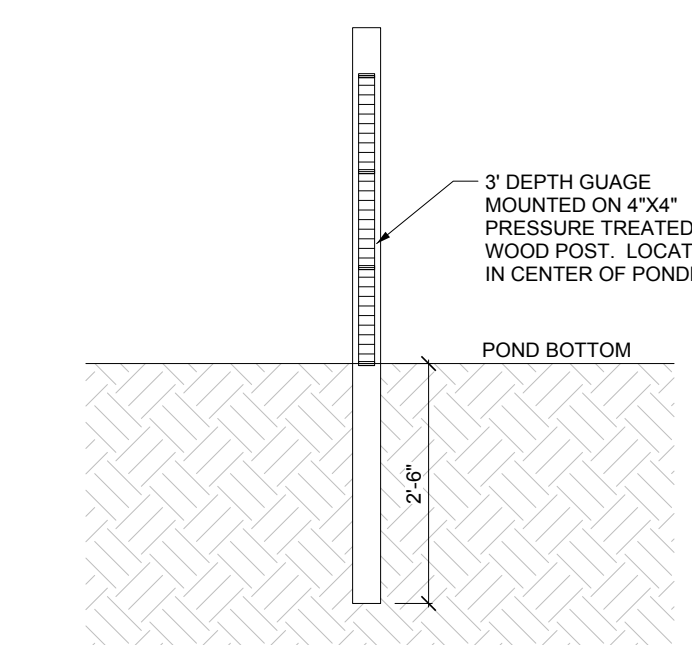
**TRACT A-1 EMBLEM ROAD  
SANTA FE, N.M. 87508  
2.499 AC +/-  
108,858 SQ FT  
PROPOSED  
LOT COVERAGE  
6,123 SQ. FEET  
(5.6%)**

**1 Site Plan**  
Scale: 1" = 20'-0"

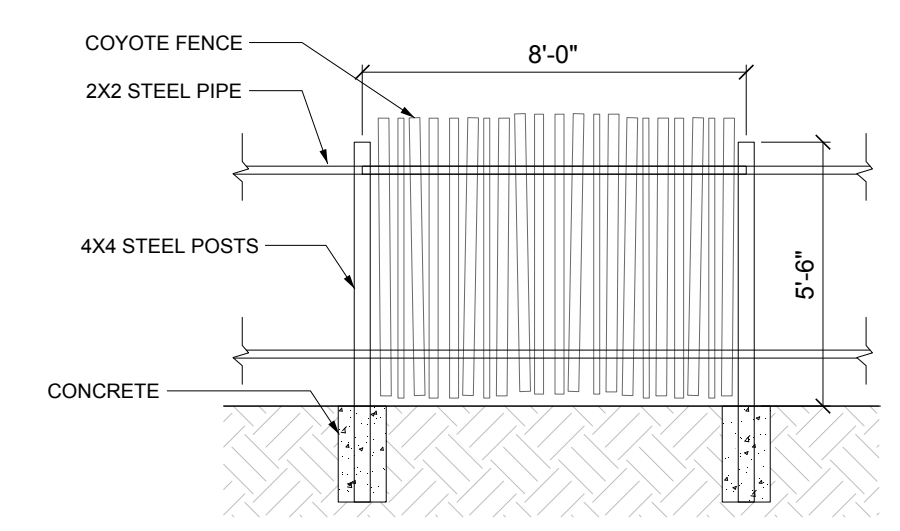


**KEYED NOTES AND LEGEND**

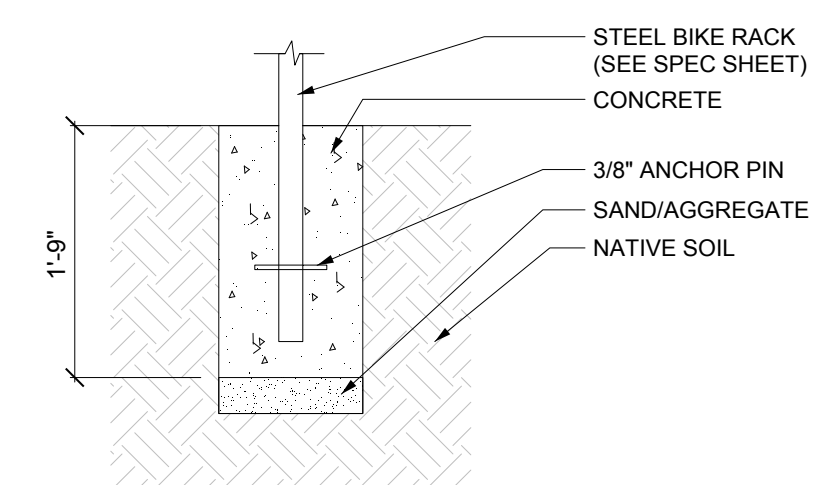
- |   |                                        |      |                                   |
|---|----------------------------------------|------|-----------------------------------|
| 1 | GREENHOUSE                             | ● TP | TELEPHONE POLE                    |
| 2 | SUPPORT BUILDING                       | ⊗    | LIGHTS - ENTRY, PARKING, SECURITY |
| 3 | EXISTING SHIPPING CONTAINER            | T    | ELECTRIC TRANSFORMER              |
| 4 | VAN ACCESSIBLE PARKING SPACE AND AISLE | E    | EXISTING OVERHEAD ELECTRIC LINE   |
| 5 | DUMPSTER (5'X8' AREA)                  | UG   | EXISTING UNDERGROUND GAS LINE     |
| 6 | BICYCLE RACK                           | W    | WATER LINE                        |
| 7 | INDUSTRIAL PRE-TREATMENT SAMPLING PORT | C    | SEWER LINE                        |
| 8 | GENERATOR AND TRANSFER SWITCH          | ▨    | AGGREGATE BASE COURSE             |



**4 Pond Depth Gauge**  
Scale: 1/2" = 1'-0"

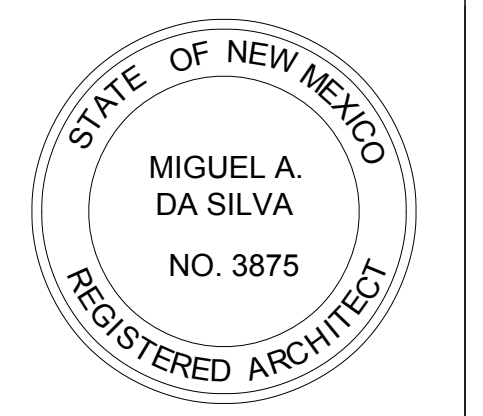


**3 Fence Elevation Detail**  
Scale: 1/4" = 1'-0"



**2 Bike Rack In Ground Mount**  
Scale: 3/4" = 1'-0"

No.	Description	Date



**OWNER**  
Nate Downey  
1000 Cordova Pl. 458  
Santa Fe, N.M. 87505

**CIVIL ENGINEER**  
Design Ingenuity  
1421 Luisa St.  
Santa Fe, NM 87505  
505.989.3557 (office)  
oraynn@designingenuity.biz

**PLUMBING / MECHANICAL / ELECTRICAL ENGINEER**  
Tipton Engineering  
2204 Rodero Park Drive  
East Building, 200  
Santa Fe, NM 87505  
ph: 505.954.1660  
dillonw@tiptonengineering.co

**STRUCTURAL ENGINEER**  
Cyrus Consulting, INC  
Massoud Ahmadi-Moghadam, P.E.  
Tel: 505.920.8254 (cell)  
Tel: 505.438.2867 (office)  
mamoghadam1@yahoo.com

**AQUAPONICS CONSULTANT**  
Regen Aquaculture  
4400 San Benito Street, Unit B  
Santa Fe, NM 87507  
ph: 720.509.9624  
joe@regenaquaculture.com

**LANDSCAPE CONSULTANT**  
Santa Fe Permaculture  
1000 Cordova Pl. #4158  
Santa Fe, NM 87505  
ph: 505.424.4444  
nate@sfpermaculture.com

**LETTUCE ETC.**  
10 EMBLEM ROAD  
Santa Fe N.M. 87505

**ARCHITECT**  
Da Silva Architecture  
931 Shoofly, St. Studio H  
Santa Fe, NM 87505  
ph: 505.660.8012  
miguel@dasilvaarch.com

**Site Plan**

Project number 2021.01  
Date 30 January 2023  
Drawn by JWS  
Checked by MAD

**A - 100**  
Scale: 1" = 20'-0"